

RCD AND SMOKE ALARM FACT SHEET

The Housing Authority has installed a number of safety devices in your home.

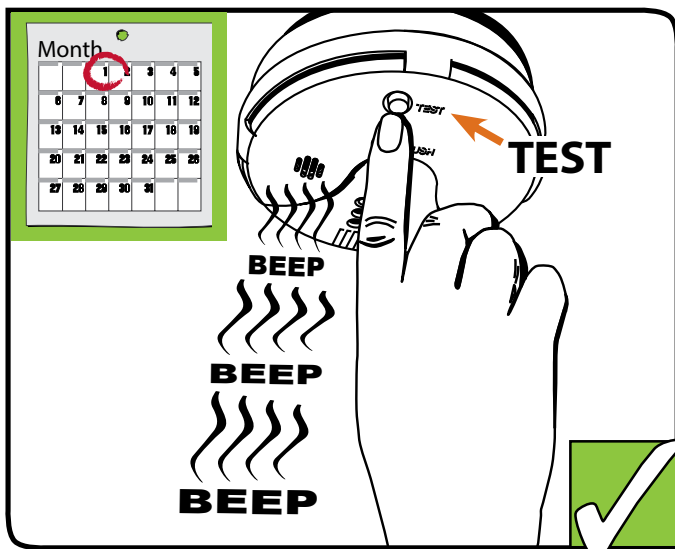
A Residual Current Device (RCD) provides protection against electric shock. If the RCD detects an imbalance in the electrical current indicating a leakage to earth (for example, current flows through someone's body to earth) the RCD immediately cuts the electricity supply to prevent electrocution.

You will have more than one RCD. They are located in the meter box and can be identified by the presence of a TEST button. You should test them every three months.

A smoke alarm alerts you to the presence of smoke and the potential of fire in the property. Your smoke alarm should be tested every month.

How to test your smoke alarm

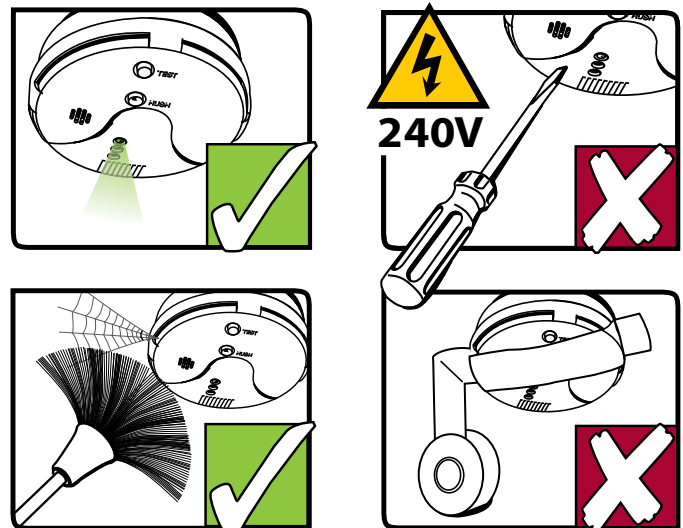
- To test the smoke alarm, turn your power off at the mains
- Press the TEST button (as illustrated). The alarm should beep loudly
- If you are unable to reach the test button, please use a broom handle
- The smoke alarm will automatically reset once the button has been released after testing
- Once the test is complete, remember to turn your power back on at the mains.



A rechargeable battery backup that cannot be changed is built into your smoke alarm. This battery does not need replacing. Ensure the smoke alarm is kept clean and that excess dust does not build up – vacuum if necessary.

- **DO NOT** use a screw driver
- **DO NOT** put tape or paint or any other cover over the alarm
- **DO NOT** remove the alarm for any reason.

If you don't hear a sound when testing or you notice any other problem with your smoke alarm you need to call Housing Direct on **1300 137 677**.



How to test your RCD

- Press the TEST button on the RCD. You should hear a click
- The lever will flip downwards to the 'off' position. This means that the device is working and the power has been turned off
- Flip the lever upwards to 'on'. You may need to push firmly. This will turn the power back on.

If the lever doesn't flip downwards or you notice any other problem with your RCD you need to contact Housing Direct on **1300 137 677**.

